

Updates provided post agenda publication

The following updates have been published and are available on-line. Hard copies will also be made available at the meeting.

- 5 **Chairman's Announcements** (*Pages 1 - 2*)
Lyneham Defence College

 - 6 **Town, Parish and Partner Updates** (*Pages 3 - 4*)
Wiltshire Fire & Rescue Service
-

DATE OF PUBLICATION: 4 November 2013

Lyneham Defence College

Lyneham Defence College will become the nation's main training site for all three armed forces – Army, Navy and Air Force. By 2019 there will be as many as 5,000 people on site.

A contract worth £230 million is currently being tendered for building works required at Lyneham and three contractors are being considered. This fixed price contract will be announced before Xmas, 2013 and building work will begin in January, 2014. This work will continue until late 2015 and the College will open in early 2016. Army REME will start to move in late 2015. At first there will be about 2,000 students and staff on site. There will be an enormous variation in the types of training on site.

There are concerns about heavy goods traffic travelling through Chippenham and heavy use of Chippenham Railway Station on Monday mornings and Friday afternoons. There are plans for these sort of movements in the initial reports, but as time goes on plans will become more fixed and Wiltshire Council will be informed of firm plans.

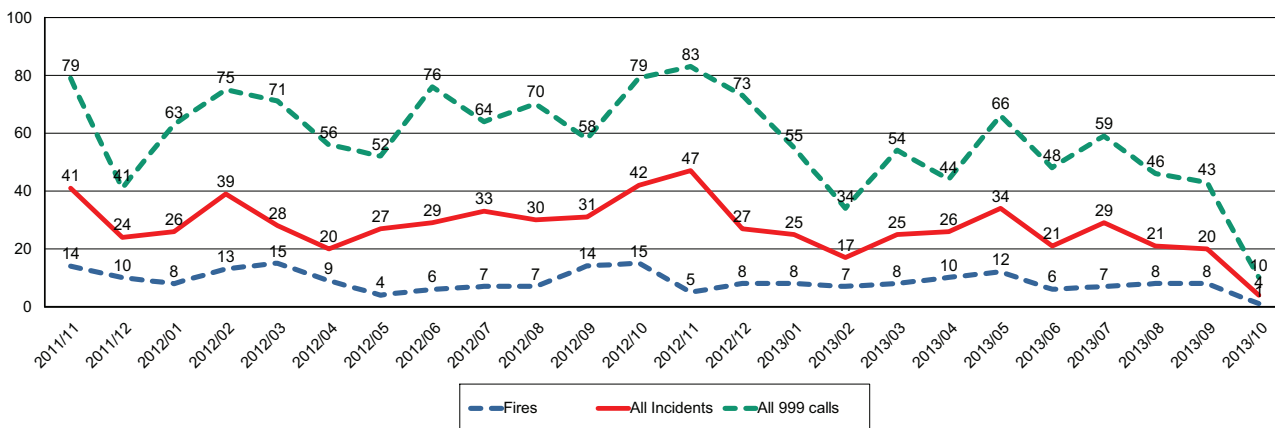
This page is intentionally left blank



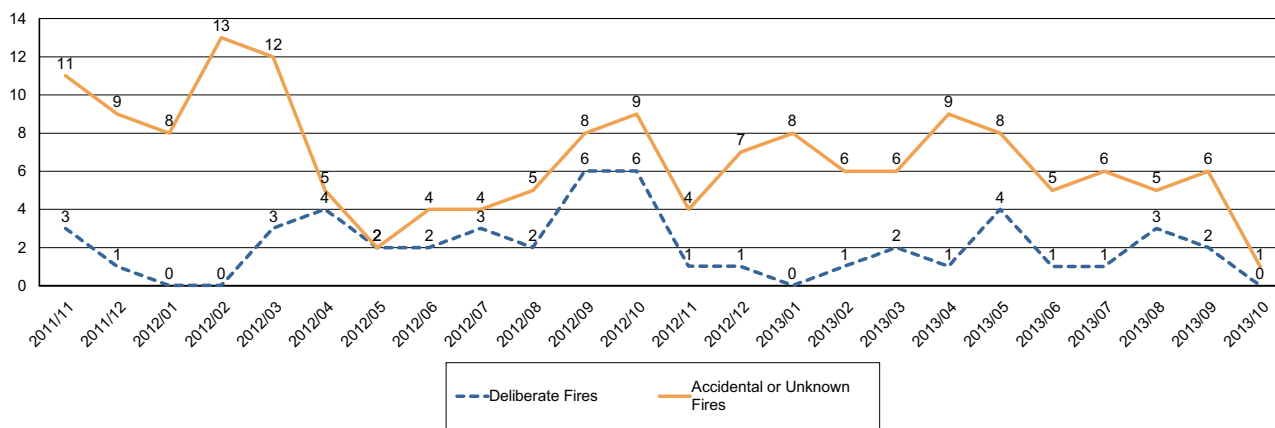
Report for Chippenham Area Board

The following is an update of Fire and Rescue Service activity up to and including October. It has been prepared using the latest information and is subject to change.

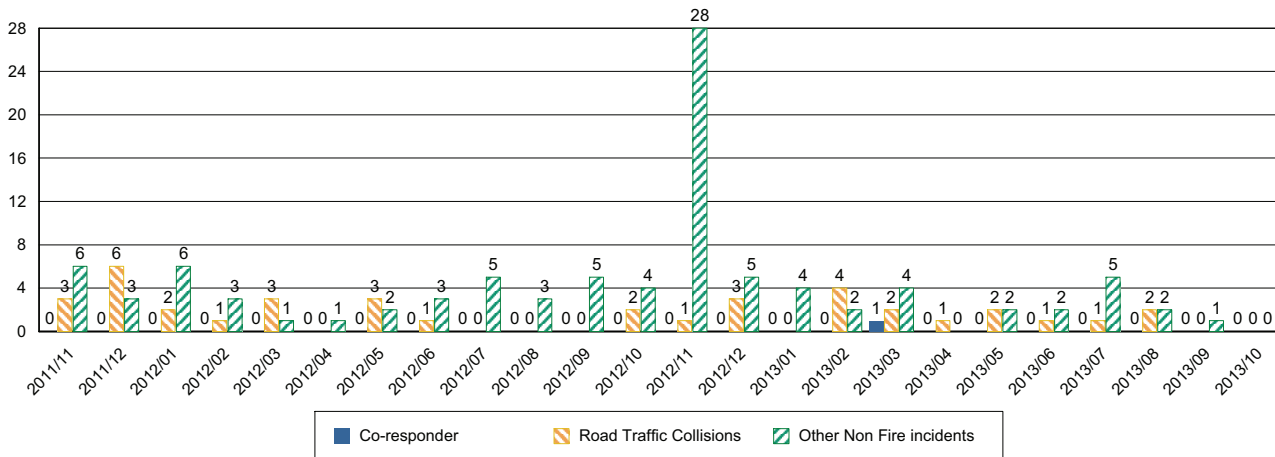
Incidents and Calls



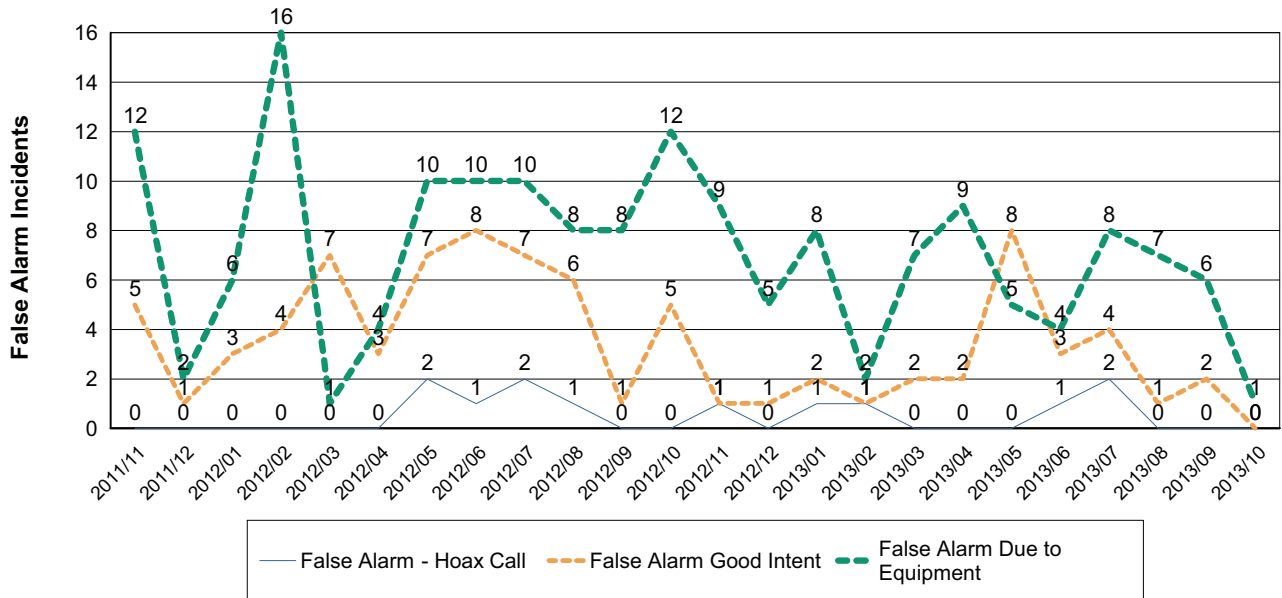
Fires by Cause



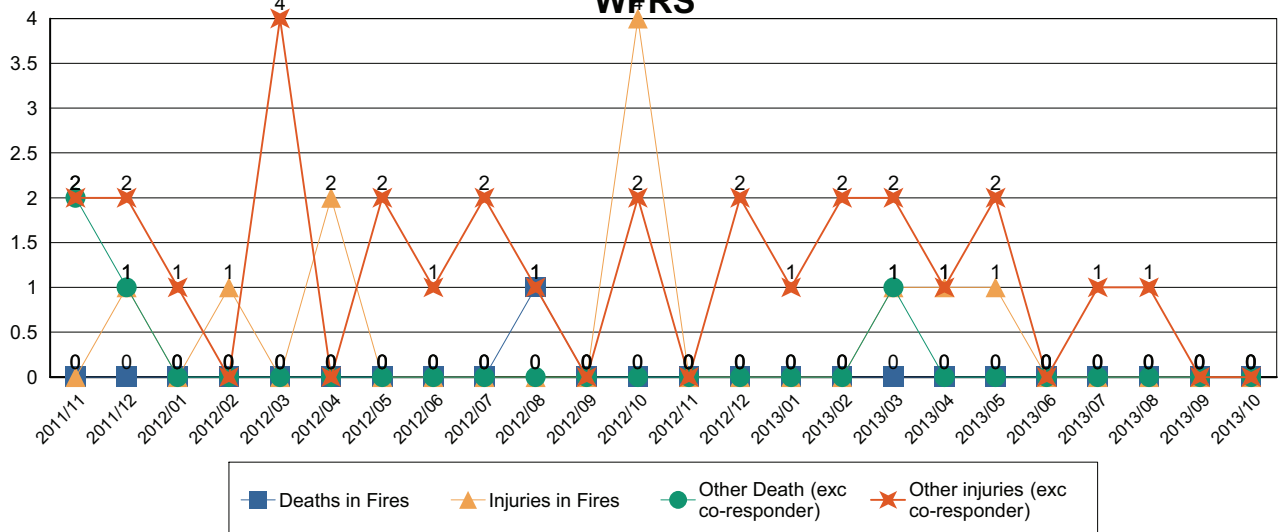
Non-Fire incidents attended by WFRS



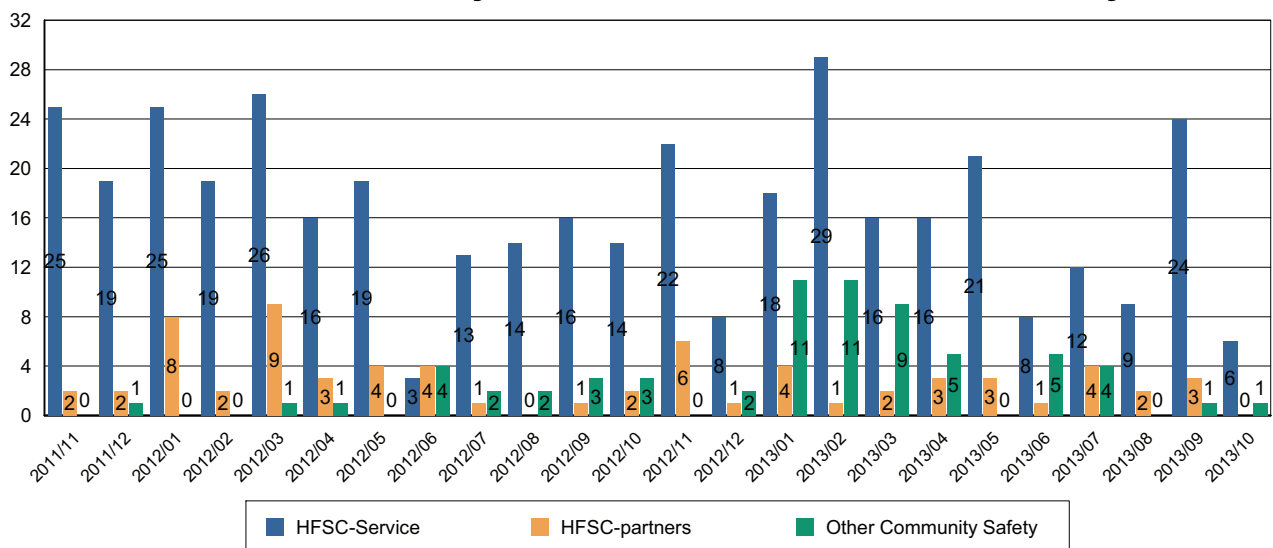
Agenda Item 6 Number of False Alarm Incidents



Death & Injuries in incidents attended by WFRS



Home Fire Safety Checks and other domestic safety



Comments and Interventions overleaf